



THE AVENUE

M A R B E L L A

Villa 5

Tipology A1

Bedrooms

4

Bathrooms

5+2

Orientation

E



Sabox
Real Estate

PRICE ON REQUEST



THE AVENUE

M A R B E L L A

VILLA 5

PLOT 1.205,34 m²

BUILT AREA

Living Area 478,24 m²

Terrace Area 188,61 m²

TOTAL BUILT AREA 666,84 m²

ACCORDING TO DECRETO 218/2005

Useful Area 407,55 m²

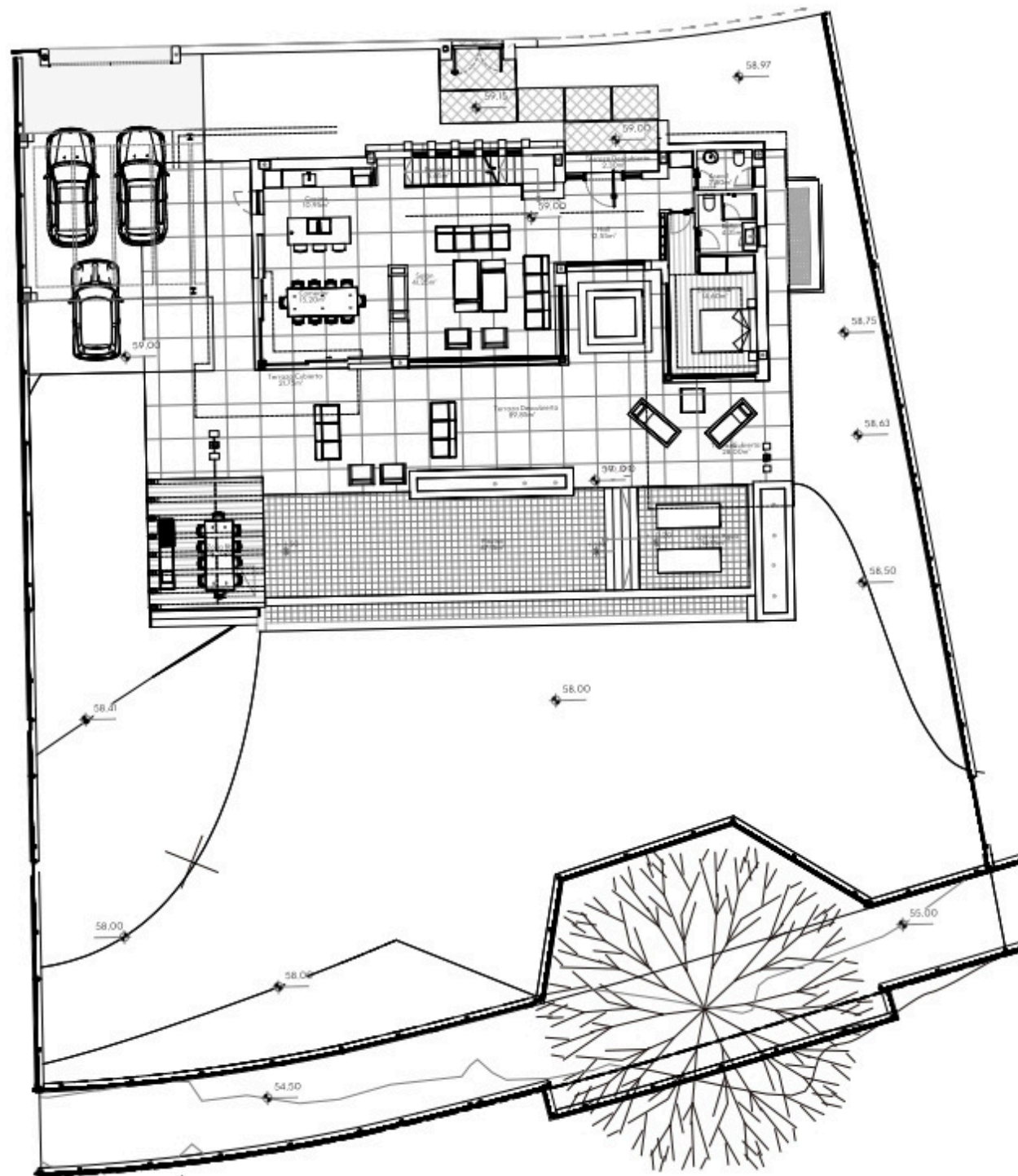
Built Area 515,29 m²



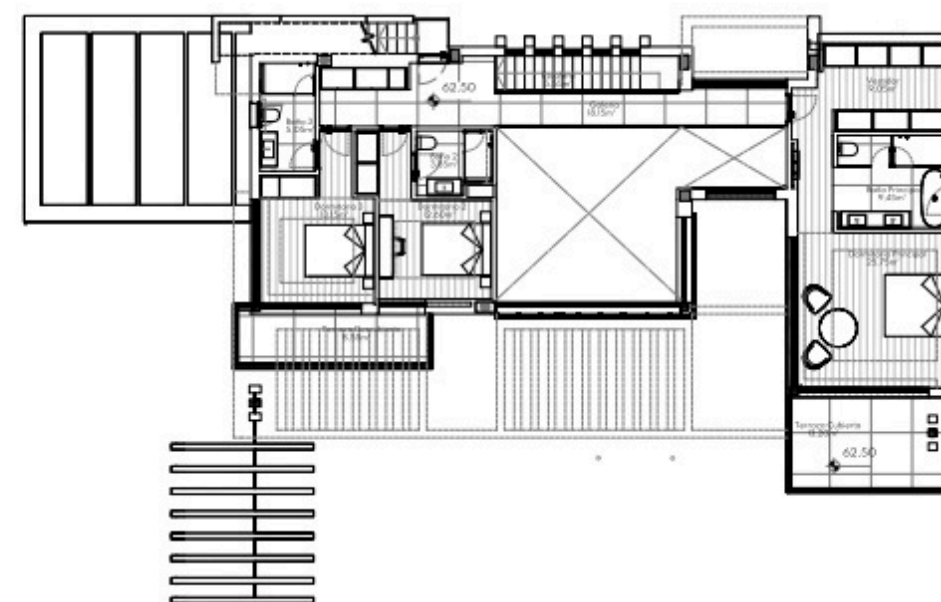


THE AVENUE

MARBELLA



MAIN LEVEL



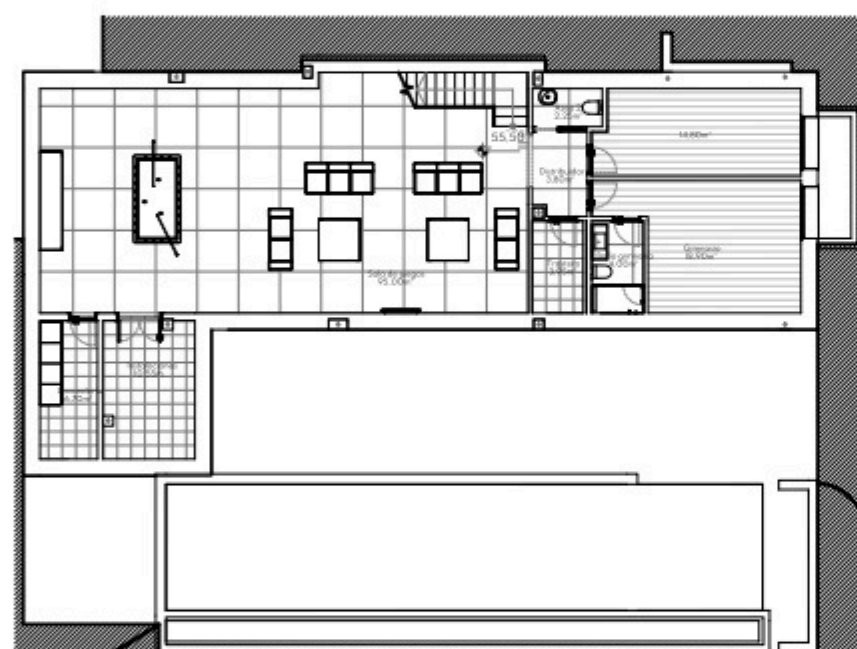
UPPER LEVEL



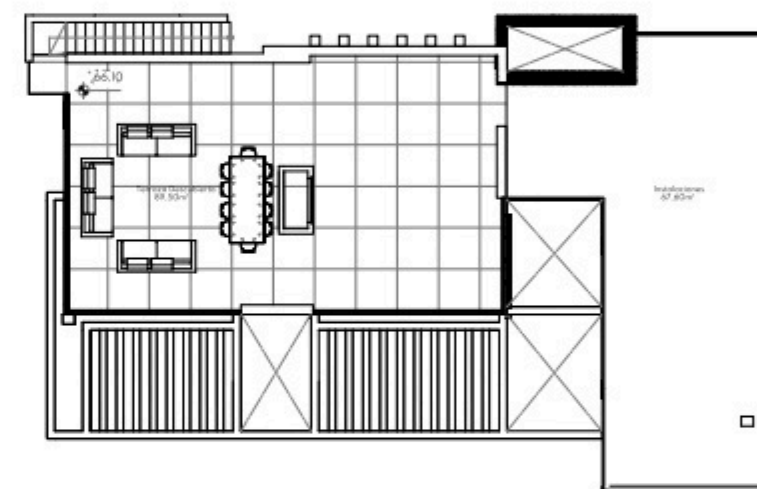
This plan may be modified depending on progress of the development. The furniture shown is purely for decorative purposes. The project manager reserves the right to make the necessary changes for any possible functional, aesthetic and legal reasons, without this negatively affecting the quality of the construction. Illustrative dimensions.



THE AVENUE
MARBELLA



LOWER LEVEL



SOLARIUM



This plan may be modified depending on progress of the development. The furniture shown is purely for decorative purposes. The project manager reserves the right to make the necessary changes for any possible functional, aesthetic and legal reasons, without this negatively affecting the quality of the construction. Illustrative dimensions.