



THE AVENUE

M A R B E L L A

Villa 8

Tipology A1

Bedrooms

4

Bathrooms

5+2

Orientation

N/E



Sabox
Real Estate

PRICE ON REQUEST



THE AVENUE

M A R B E L L A

VILLA 8

PLOT	928,28 m ²
------	-----------------------

BUILT AREA

Living Area	478,24 m ²
-------------	-----------------------

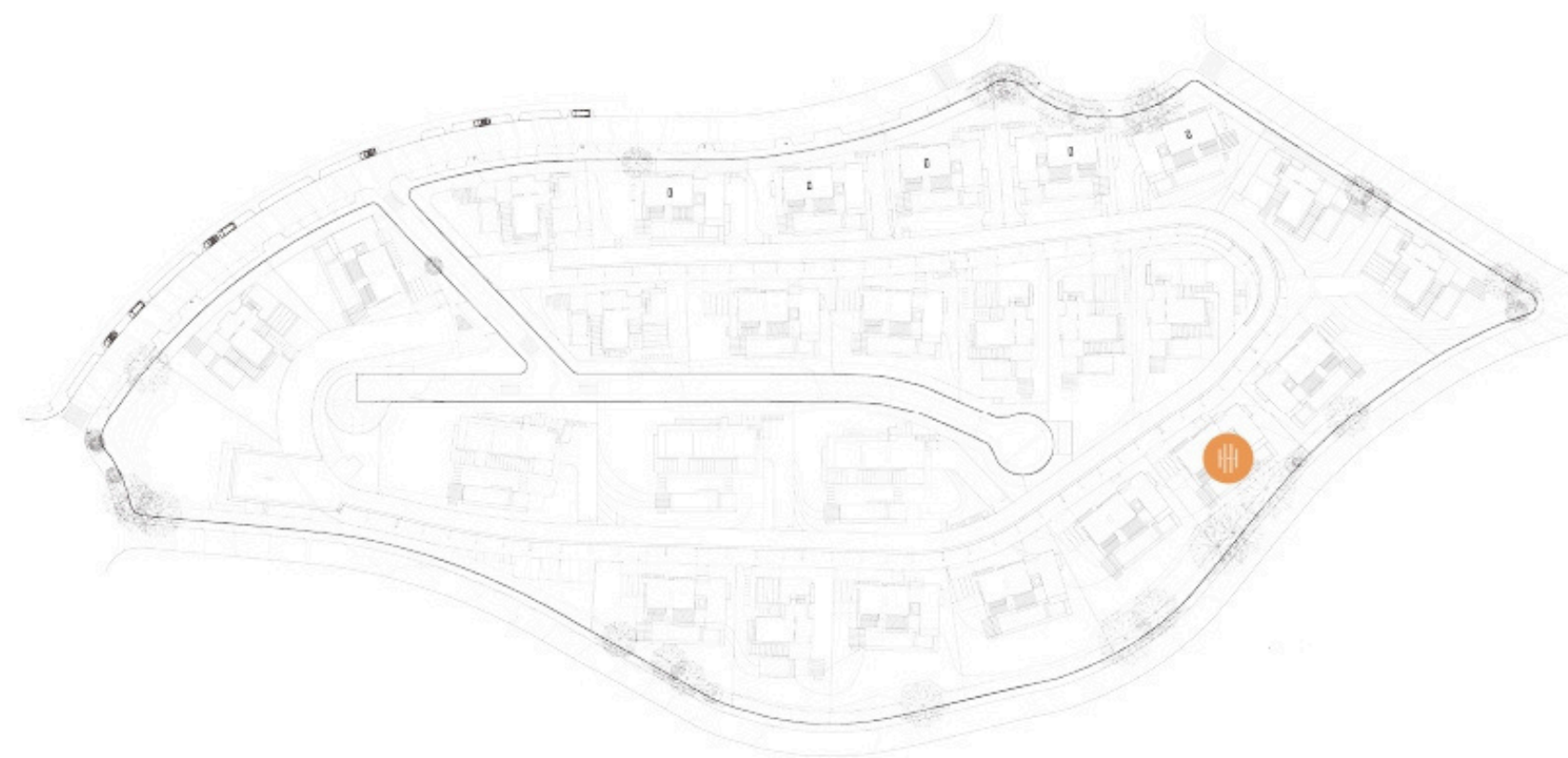
Terrace Area	188,61 m ²
--------------	-----------------------

TOTAL BUILT AREA	666,84 m²
-------------------------	-----------------------------

ACCORDING TO DECRETO 218/2005

Useful Area	407,55 m ²
-------------	-----------------------

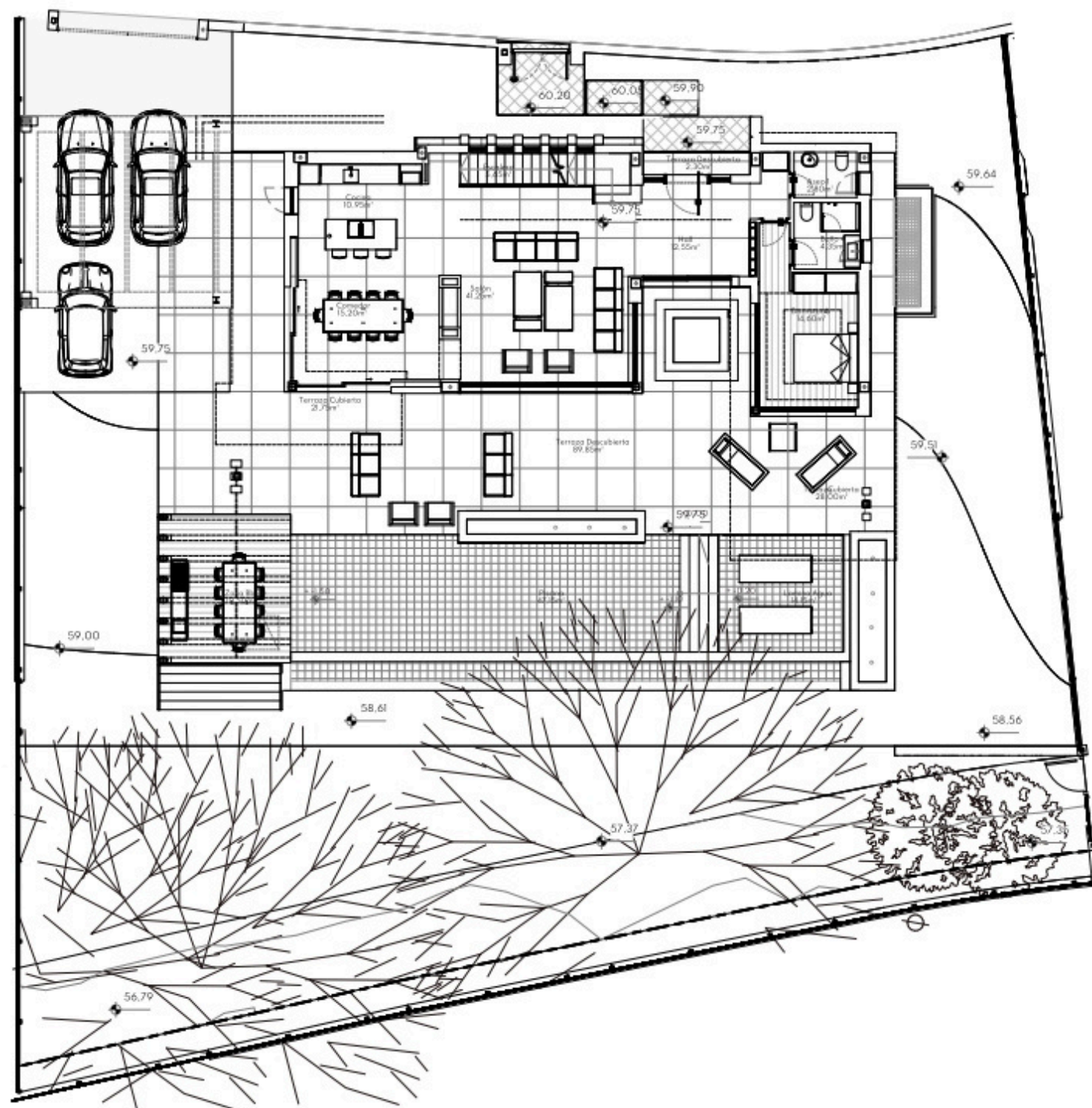
Built Area	515,29 m ²
------------	-----------------------



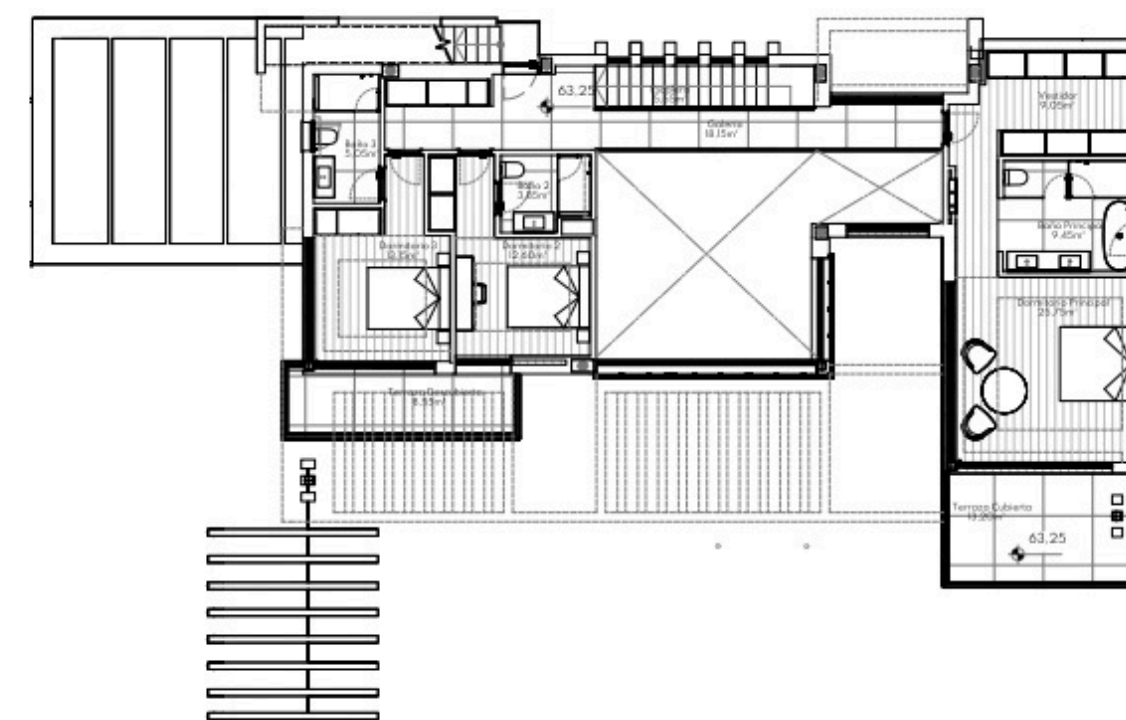


THE AVENUE

MARBELLA



MAIN LEVEL



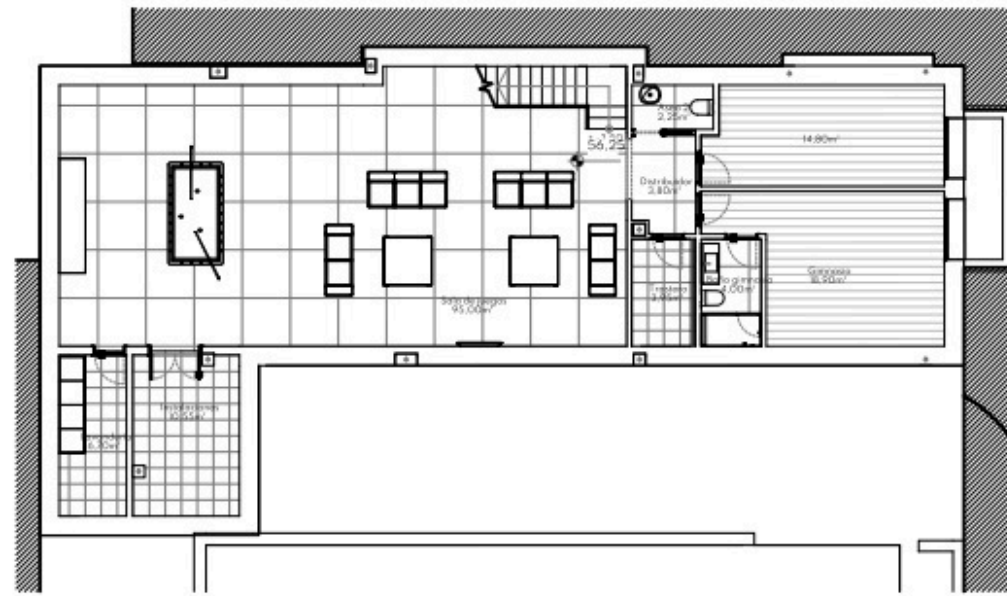
UPPER LEVEL

This plan may be modified depending on progress of the development. The furniture shown is purely for decorative purposes. The project manager reserves the right to make the necessary changes for any possible functional, aesthetic and legal reasons, without this negatively affecting the quality of the construction. Illustrative dimensions.

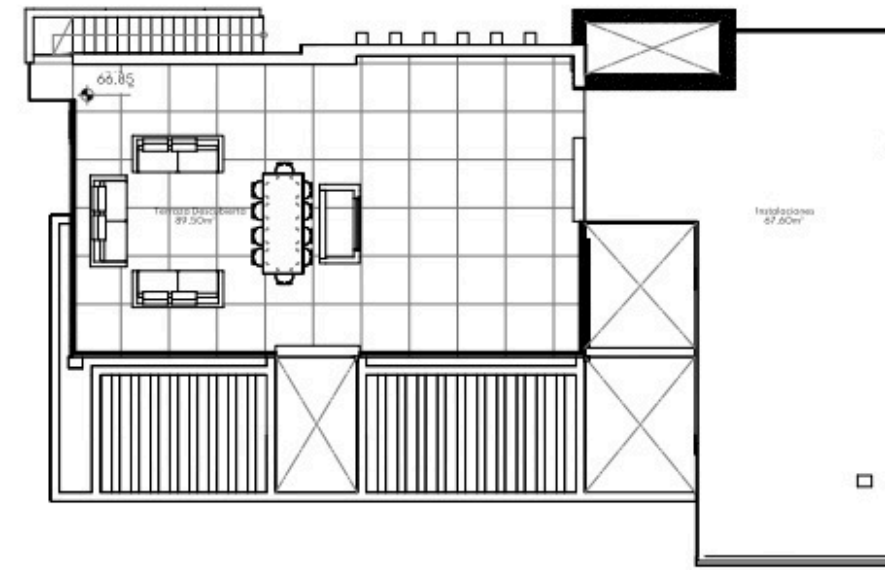


THE AVENUE

M A R B E L L A



LOWER LEVEL



SOLARIUM



This plan may be modified depending on progress of the development. The furniture shown is purely for decorative purposes. The project manager reserves the right to make the necessary changes for any possible functional, aesthetic and legal reasons, without this negatively affecting the quality of the construction. Illustrative dimensions.